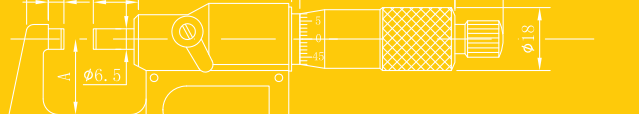




# ASIMETO

CATALOG NO. AS1617



## Blade Micrometers

112 / 117 Series



117-01-1



112-01-0



S-wrench



Battery



Standard

### STANDARD ACCESSORIES

- S-wrench, Battery (Digital models), Standard (over 1"/25mm range)
- Warranty card, Instruction manual, Calibration certificate
- Inch/Metric conversion
- Upon switching on the display will read the actual absolute measuring position
- Automatic On/Off to maximize battery life
- Absolute or incremental measuring modes

### FEATURES

- Resolution: Digital reading: .00005" / 0.001mm Scale on digital models: .0001" / 0.01mm Scale on mechanical models: .001" / 0.01mm
- Ratchet stop
- For measuring the groove diameter of shafts, keyways, and other hard to reach portions
- Non-rotating spindle
- Carbide tipped measuring faces
- Grey painted steel frame

### SPECIFICATIONS

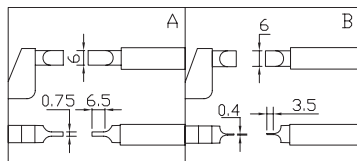
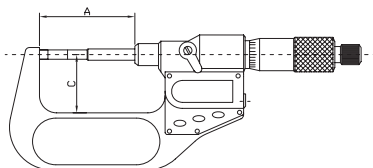
#### Digital models

Inch Range	Accuracy	Metric Range	Accuracy	Anvil Type	Inch Code No.	Metric Code No.
0-1"	±0.0001"	0-25mm	±0.003mm	A	117-01-1	117-01-0
1-2"	±0.0002"	25-50mm	±0.003mm	A	117-02-1	117-02-0
2-3"	±0.0002"	50-75mm	±0.003mm	A	117-03-1	117-03-0
3-4"	±0.0002"	75-100mm	±0.004mm	A	117-04-1	117-04-0
4-5"	±0.0002"	100-125mm	±0.004mm	A	117-05-1	117-05-0
5-6"	±0.0002"	125-150mm	±0.004mm	A	117-06-1	117-06-0
0-1"	±0.0001"	0-25mm	±0.003mm	B	117-01-3	117-01-2
1-2"	±0.0002"	25-50mm	±0.003mm	B	117-02-3	117-02-2
2-3"	±0.0002"	50-75mm	±0.003mm	B	117-03-3	117-03-2
3-4"	±0.0002"	75-100mm	±0.004mm	B	117-04-3	117-04-2
4-5"	±0.0002"	100-125mm	±0.004mm	B	117-05-3	117-05-2

#### Mechanical models

Inch Range	Accuracy	Metric Range	Accuracy	Anvil Type	Inch Code No.	Metric Code No.
0-1"	±0.0001"	0-25mm	±0.004mm	A	112-01-1	112-01-0
1-2"	±0.0002"	25-50mm	±0.004mm	A	112-02-1	112-02-0
2-3"	±0.0002"	50-75mm	±0.005mm	A	112-03-1	112-03-0
3-4"	±0.0002"	75-100mm	±0.005mm	A	112-04-1	112-04-0
4-5"	±0.0002"	100-125mm	±0.006mm	A	112-05-1	112-05-0
5-6"	±0.0002"	125-150mm	±0.006mm	A	112-06-1	112-06-0
0-1"	±0.0001"	0-25mm	±0.004mm	B	112-01-3	112-01-2
1-2"	±0.0002"	25-50mm	±0.004mm	B	112-02-3	112-02-2
2-3"	±0.0002"	50-75mm	±0.005mm	B	112-03-3	112-03-2
3-4"	±0.0002"	75-100mm	±0.005mm	B	112-04-3	112-04-2
4-5"	±0.0002"	100-125mm	±0.006mm	B	112-05-3	112-05-2

#### Dimension



Range	A	C
Inch/Metric	mm	mm
0-1"/0-25mm	57	32
1-2"/25-50mm	82	44.5
2-3"/50-75mm	107	57
3-4"/75-100mm	132.6	69.5